

CARBIDE BLANKS AND WEAR PARTS



TechMet

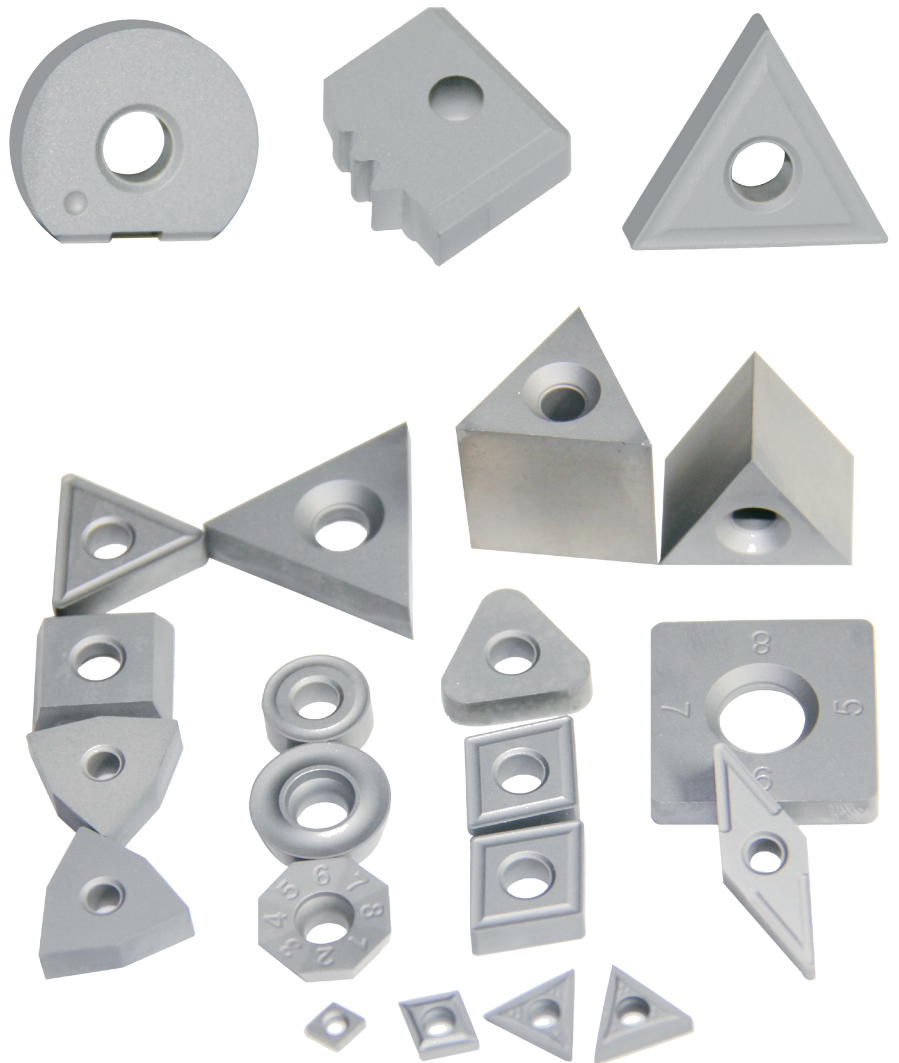
Premium quality material, with complete traceability from ore to finished product
Sinter HIP process utilized for uniform and consistent metallurgical properties

Indexable Insert Blanks

- ANSI / ISO Standard Insert Blanks
- Grooving Blanks
- Threading Blanks
- Broach Bar and Gear Stick Blanks

Flat Blanks

- Standard Tool Blanks (STB's)
- 1000 Style Blanks
- 2000 Style Blanks
- Saw Discs



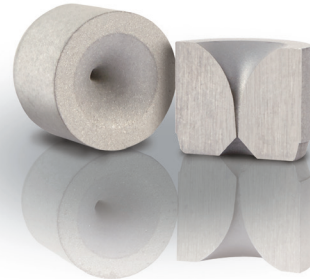
Precision Wear Parts



- Sleeves and Bushings
- Nozzles
- Disc Valves and Ball Valves
- Seal Rings
- Flow Control Parts



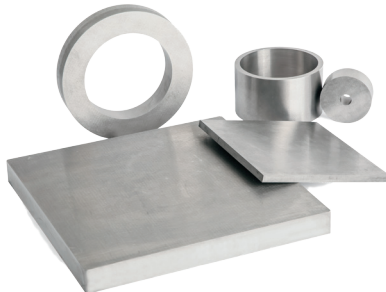
Drawing Dies



- Wire Drawing Dies
- Tube Drawing Dies
- Mandrel and Scarfing Dies
- Wire Guides

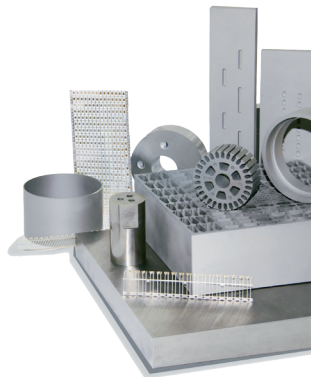


EDM Blocks



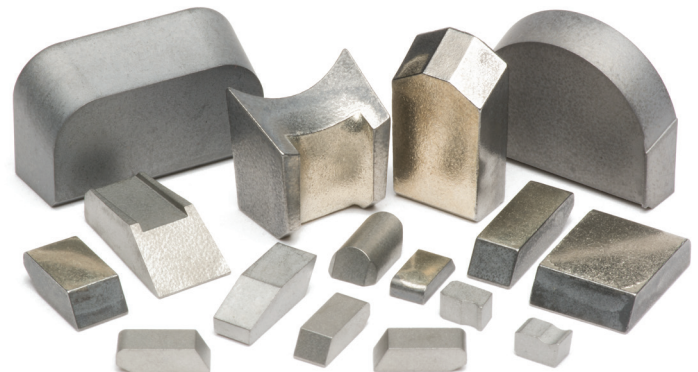
For a wide range of stamping, progressive and fabricating applications. Stress-relieved to prevent cracking.

- Corrosion-resistant Grades
- Standard EDM Blocks
- Standard EDM Rings



Products for Wood and Stone

- Saw Tip Blanks
 - ♦ Brazed
 - ♦ Pre-Tinned
- Knives and Profile Blanks
- Hammer and Percussion Tips



CARBIDE BLANKS AND WEAR PARTS



Since 1998, TechMet has supplied the highest quality and advanced technology carbide products to fabricators and Original Equipment Manufacturers.

TechMet provides local service and support to customers across North America. Our team of experienced metallurgical specialists can recommend or develop the grade to meet your application requirements. In addition, we offer advanced material inspection, testing and analysis from our fully equipped metallurgical laboratory at our headquarters in Hickory, North Carolina.

As the largest supplier of sintered carbide products for OEM's in North America, TechMet has the proven experience to engineer the optimal solution for your unique application.

TechMet

730 21st Street Drive SE • Hickory, NC • 28602
Phone 877 872-0044 • Fax 828 624-0228

www.techmet-carbide.com